



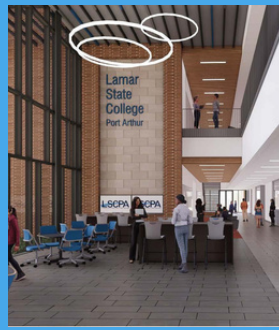
**2024 REPORT TO THE COMMUNITY**

**CELEBRATING 2014-2024**

**DECADE OF DISTINCTION**

LAMAR STATE COLLEGE PORT ARTHUR

**HISTORY-DEFINING MOMENTS  
OF THE PAST 10 YEARS**





DR. BETTY REYNARD

# PRESIDENT'S WELCOME

## *Celebrating LSCPA's Decade of Distinction*

A decade seems like a very long time but as I approached my 10-year anniversary as president of Lamar State College Port Arthur in September 2024, it truly seems to have passed in the blink of an eye.

My goal when I started at LSCPA was to help the college succeed at every level possible. This team of administrators and educators has brought about some of the most amazing things. We've seen new state-of-the-art facilities, new technical and academic degrees and certificates, and we've watched as our enrollment grows every semester.

In fact, we were proud to announce in October that the 4,687 students who enrolled for the Fall 2024 semester sets a new all-time record for any semester at LSCPA.

None of this could have happened without the dedicated support of our faculty and staff. But, just as critical is the support we receive from our community.

It is this partnership that enables us to expand our goals every year. It is this vision and combined

coordinated effort that has brought great new facilities such as the Umphrey Industrial Technology Center and its adjacent Motiva Training Center, the Industry Training Center, the beautifully renovated Ruby Fuller Building, and our newest addition, the Allied Health & Sciences Building. The CDL Training & Testing Center has brought a new opportunity for Southeast Texans to invest in a new, lucrative career.

We are far more than a collection of buildings, though. We have seen student enrollment explode thanks to lower tuition, books that are much less expensive, and grants that provide scholarships to deserving students.

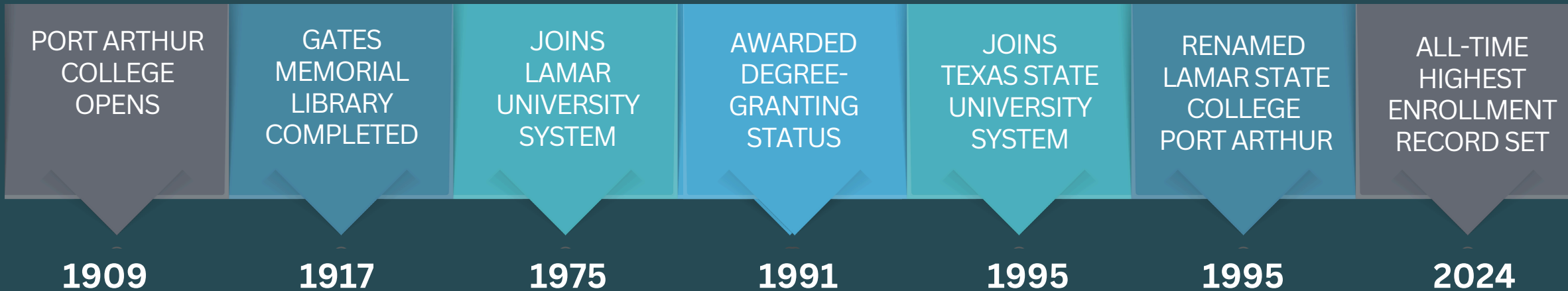
We embraced the opportunity to involve younger students, enhancing our dual enrollment offerings and partnering with several Early College High Schools.

So as we look back, it is truly appropriate to laud these past 10 years as a "Decade of Distinction."

Here's looking to the same level of success, or better, in the coming decade.



## *Lamar State College Port Arthur Through the Years*



# INSIDE

- 4 Umphrey Industrial Technology Center
- 6 Motiva Petrochemical Training Facility
- 8 CDL Education and Examination Center
- 10 Allied Health and Sciences Building
- 12 Ruby Fuller Building Renovations
- 14 Record Enrollment after COVID-19 lull
- 16 Dual Credit and Early College High School
- 18 New Technical Education Programs
- 20 Monroe Educational Building Renovations
- 22 Other Notable Events from the Past 10 Years
- 24 2023-2024: Highlighting a Record-Setting Year
- 26 More Highlights, About LSCPA & TSUS Regents



# 2017 Umphrey Industrial Technology Center

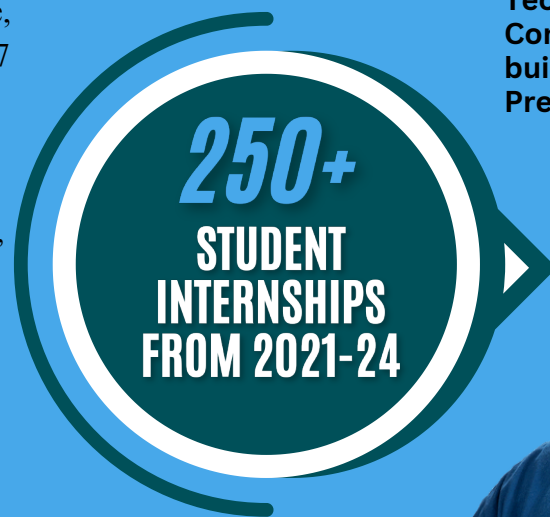
**UITC acknowledges the importance, impact of technology careers in Southeast Texas**

Lamar State College Port Arthur officially opened the Sheila McCarthy Umphrey Industrial Technology Center on Thursday, October 26, with a ribbon cutting ceremony that featured the new facility's namesake at its focus. Sheila McCarthy Umphrey, a graduate of Port Arthur Thomas Jefferson High School, made the largest one-time contribution in LSCPA history with a \$500,000 donation toward the construction of the building.

The construction of the facility withstood challenges by Mother Nature, especially the September 2017 floods left by Hurricane Harvey. The facility houses Process Technology, Instrumentation Technology, Drafting and Heating, Ventilation and Air Conditioning programs.

**Sheila McCarthy Humphrey, a Port Arthur native, made the largest one-time contribution in school history with a donation toward the completion of the UITC.**

**INSTRUMENTATION SOPHOMORE HUY NGUYEN**



The Umphrey Industrial Technology Center, above, hosts classes for Process Technology, Instrumentation, Computer Drafting, and Heating, Ventilation, and Air Conditioning programs. Sheila McCarthy Umphrey, a Port Arthur native and the building's namesake, right, cut the ribbon on the new facility, flanked by LSCPA President Dr. Betty Reynard and Texas Speaker of the House Dade Phelan.



**WWW.BEST-HVAC-SCHOOL.COM RANKED LSCPA AMONG THE TOP 20 HVAC MAINTENANCE PROGRAMS IN TEXAS FOR 2023.**





A ribbon cutting took place in November 2019 to commemorate the opening of the Motiva Training Unit, located adjacent to the Umphrey Industrial Technology Center.



# 2019

## Motiva Petrochemical Training Facility

### Hands-on technology gives student leg up on competition for petrochemical careers

To serve the world class petrochemical companies that call Southeast Texas home, Lamar State College Port Arthur opened the Motiva Petrochemical Training Facility. The two units that make up the facility offer training with equipment that makes up what one official referred to as “a complete refinery operation right here at the college.”

The units are rare in the world of higher education, especially at the two-year college level. The Hands-On Training (HOT) No. 3 Glycol Distillation Trainer is one of just four in the United States and the only one in Texas. The HOT 1 Process Trainer is one of only 23 in the country. LSCPA is the only two-year college to possess both training units. The two units, which are located just outside the Umphrey Industrial Technology Center, are designed to teach the fundamentals of process operations in a safe but realistic manner.

### Motiva donates \$250,000 to processing unit

Motiva donated \$250,000 to enhance the LSCPA Process Technology Program and support the \$2 million grant that led to the construction of a glycol processing training unit at the college. For their contribution, Motiva was awarded naming rights for the facility.



“This community is important to us,” said Greg Lucchesi, Motiva Port Arthur General Manager. “It’s not just a place we work – it’s home to many employees who work at Motiva. We’re honored to help provide a safe and engaging learning environment for students with these donations.”







# 2023

## CDL Education & Examination Center

**Federal, state, county entities contribute with additional donation from Temple Foundation**

A group of community-minded entities saw a critical problem and came together to find a solution. LSCPA joined forces with federal and state agencies, Jefferson County, and the T.L.L. Temple Foundation to fund the CDL Education and Examination Center. The facility is the largest of its kind in the state of Texas, offering the opportunity for students to not only train for CDL credentials, but to get a quick-jump on testing. LSCPA's CDL Program extends from the Southeast Texas location to remote training in Jasper and Livingston. Jefferson County offered 24 acres of land for this project and initially they received \$4.3 million from the

Cares Act post-COVID-19 pandemic. The T.L.L Temple Foundation invested \$1.7 million.



Grand Opening Celebration for the CDL Education & Examination Center took place in July 2023.





# 2024

## Allied Health & Sciences Building

Facility addresses critical need for new nurses across the region and state

Lamar State College Port Arthur broke ground on a new \$37.4 million Allied Health and Sciences Building that is set to house several of its programs when it opens in March 2025.

The new facility will house programs for nursing, surgical technology, drug and alcohol abuse counseling, and various science classes. It will feature classrooms, chemistry and biology labs, and nursing and surgical simulators.

The nearly \$38 million building, which is being built along Procter Street near the center of campus, was funded by the Tuition Revenue Bond LSCPA received after Gov. Greg Abbott signed Senate Bill 52 in October 2022.

The building will offer the Allied Health and Sciences department over 30,000 square feet of new space.



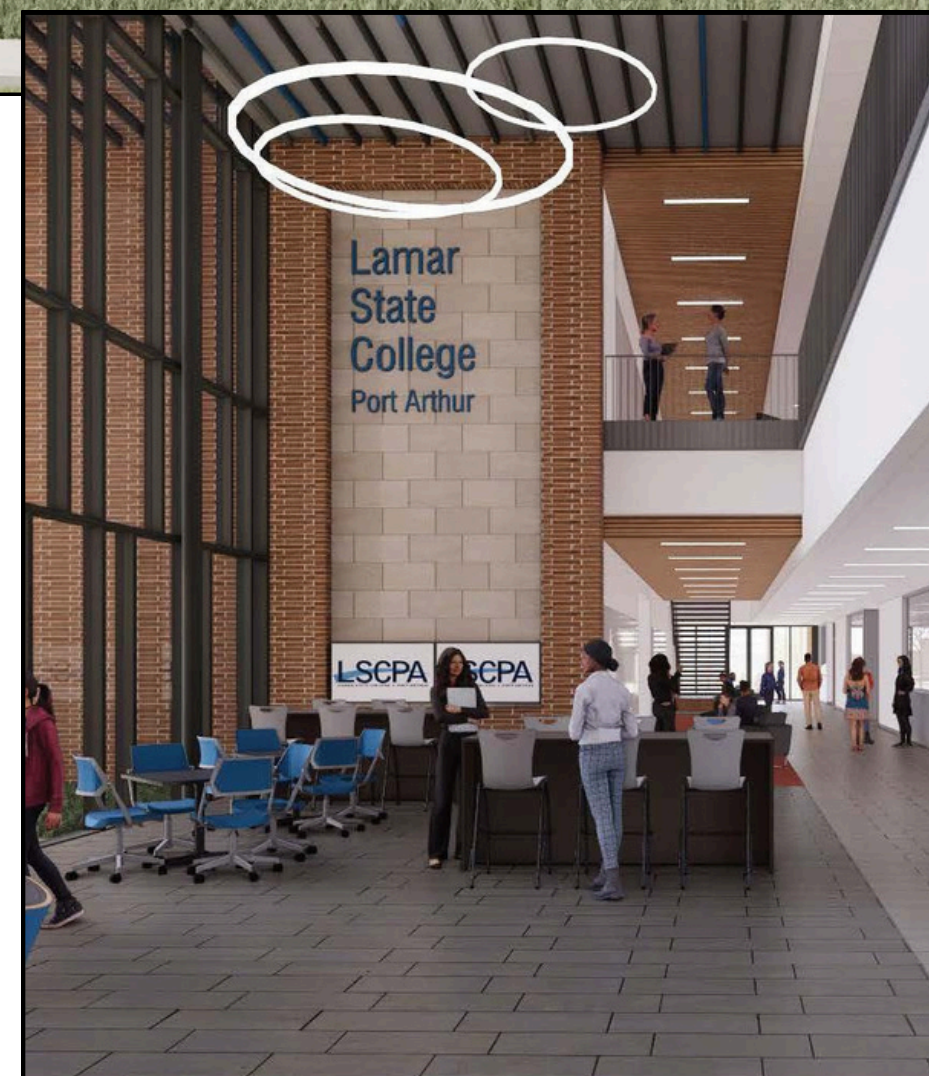
**100%**  
PASSING RATE  
FOR 2023 ADN  
STATE TESTING

SCHEDULED FOR COMPLETION 2025



Administrators at LSCPA celebrated a "Topping Off" Ceremony during the summer of 2024, signing a girder that was then placed atop the new construction.

WINNIE SOPHOMORE NURSING STUDENT DEVIN LEDOUX





# 2020

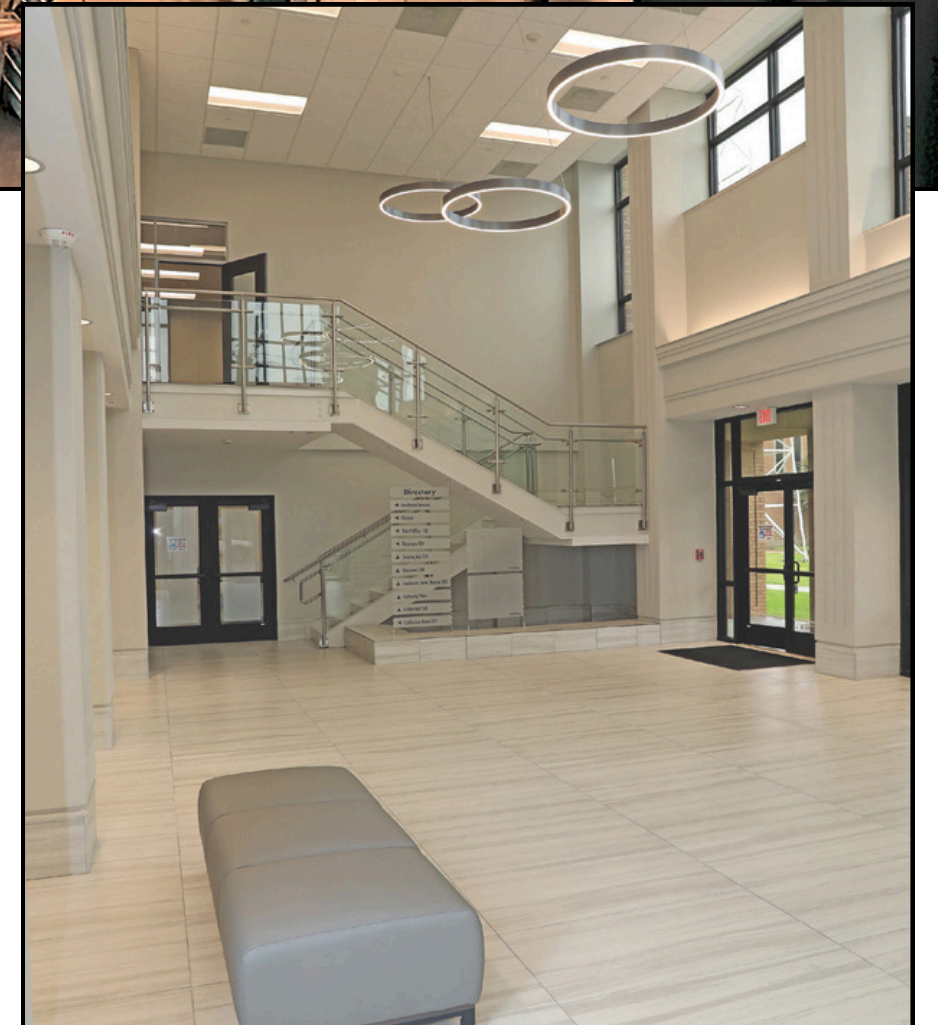
## Ruby Fuller Building Renovations

### Historic Port Arthur Methodist church home to Hispanic-Serving Institution program

Before 2019, few people had seen the inside of the Lakeshore Drive Methodist Church, especially its chapel. After Hurricane Harvey flooding, the usable part of the building, on the lower levels, were deemed a full loss. But approximately \$6 million in state funds allowed for the facility to be renovated and turned into a modern-day state-of-the-art school building with a historical, Biblical feel. The facility famously houses the College's Hispanic-Serving Institution program, funded through a Title V grant. Additionally, the 109-year-old Fuller Building also provides a home to Enrollment Services as well as various meeting spaces that are open for use by LSCPA staff and students, as well as the public.



According to [CommunityCollegeReview.com](https://www.communitycollegereview.com)





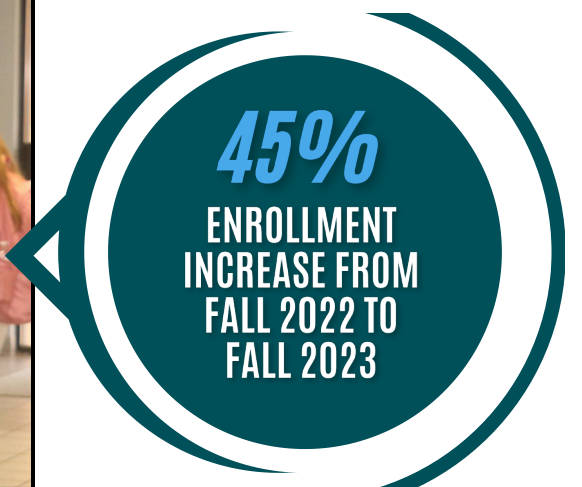


# 2024 Record Enrollment after COVID-19 lull

**LSCPA posts highest enrollment in school's 115-year history, recording 4,687 Fall students**

More than 100 years ago, LSCPA opened its doors as Port Arthur College with city leaders seeking to train citizens in business and industry. Over the years, the campus has grown and expanded, adding new facilities, new programs, and more students. Never have there been as many students, though, than for the Fall 2024 semester. The college saw a 24 percent increase from Fall 2023 to Fall 2024 as LSCPA collected 4,687 active students, the most in the school's 115-year history. The growth is attributed in great part to the burgeoning dual credit population with high school students making up 68 percent of Fall 2024 enrollment. Ultimately, the record-setting effort came in response to the loss of students due to the COVID-19 shutdown in 2020.

The addition of several new programs and an expanding physical presence on campus also contributed to the growth.







# 2020

## Dual Credit, Early College HS

**Incredible participation leads to record enrollment increases since program inception**

It's an amazing thing to witness. Students from Woodrow Wilson Early College High School and Bob Hope Early College High School walk across the stage at LSCPA's Carl Parker Center to accept their college degree or certificate. The incredible part? They're still a week away from being high school graduates. Thanks to Early College High School participation, prep students are finding themselves with a two-year head start on a bachelor or masters degree. Students attend free, taking classes in-person and online at

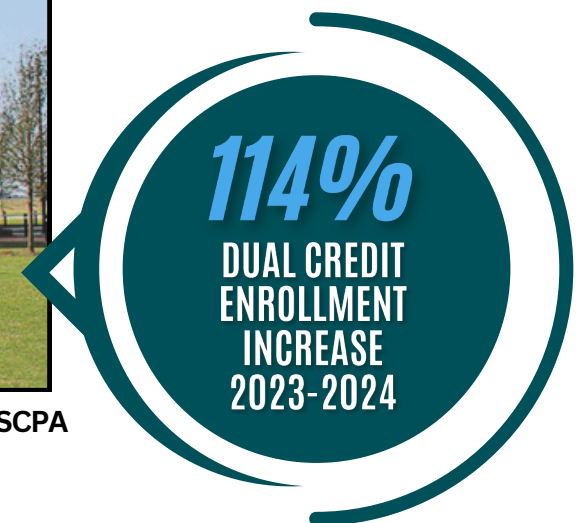


Bob Hope ECHS (above) and Wilson ECHS are two of more than 20 schools participating in Dual Credit opportunities at LSCPA.



Woodrow Wilson Early College High School is located on Lakeshore Drive in Port Arthur, adjacent to the LSCPA downtown campus. The first graduating class (top) received diplomas and certificates in 2020.

LSCPA. Thanks to local ECHS programs and Dual Credit participation across Texas and Louisiana, the College's enrollment has exploded, setting a new record in the school's 115-year history with 4,687 students for Fall 2024, an increase of 24 percent.



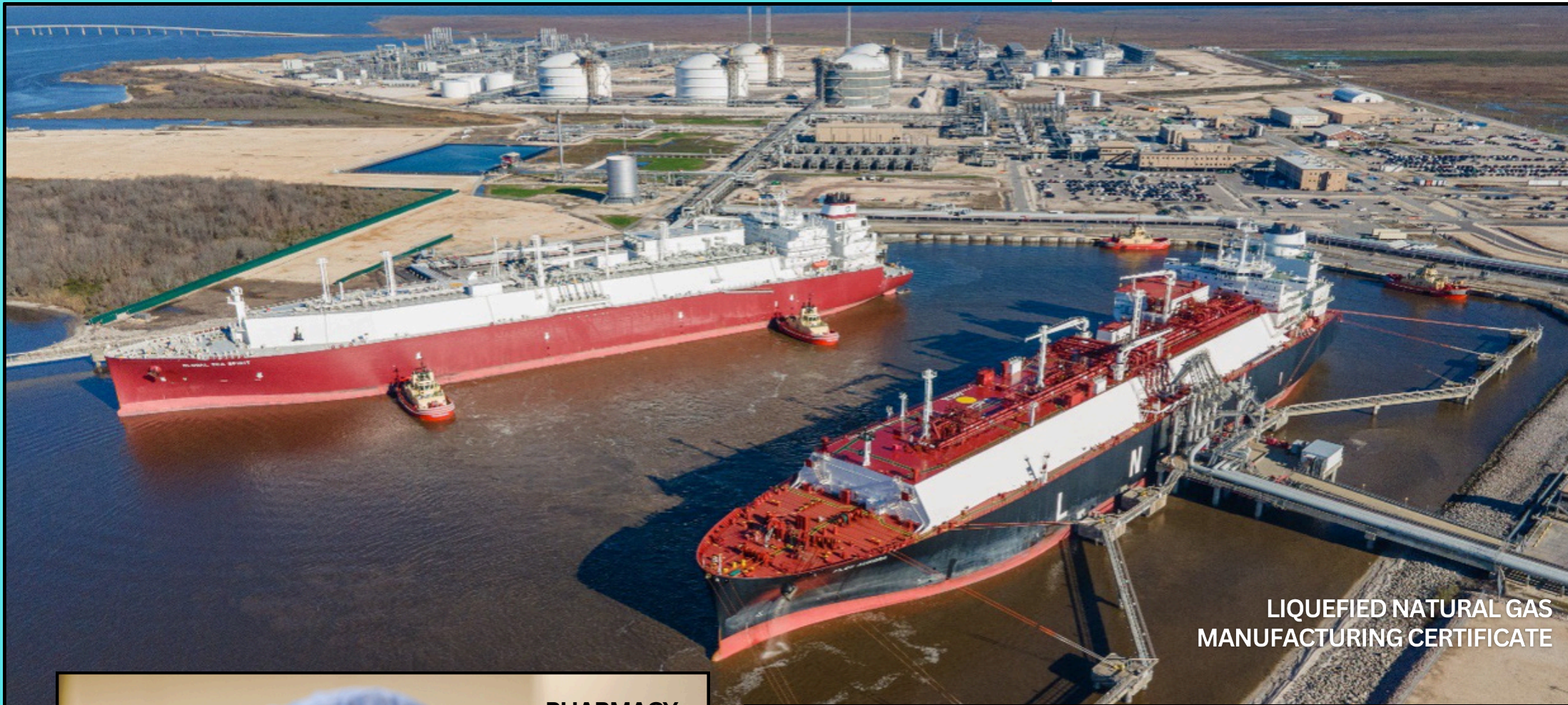


# 2017-2024

## New Technical Education Programs

**More than a dozen degrees, certificate programs added meet career, academic goals**

Perhaps one of the most important areas of growth came in the addition of new programs, chosen based in great part on the career paths that provide lucrative job opportunities. These programs, all in the Technical Education area, help meet the staffing needs of area business and industrial entities. “When you are able to weigh the needs of the students with the needs of employers across the state and nation, you’ll find a winning combination,” said LSCPA President Dr. Betty Reynard.



LIQUEFIED NATURAL GAS MANUFACTURING CERTIFICATE



PHARMACY TECHNOLOGY CERTIFICATE



CULINARY ARTS DEGREE & CERTIFICATES

### NEW PROGRAMS AT LSCPA

- 2017
- DRAFTING TECHNOLOGY CERTIFICATE
- DRAFTING TECHNOLOGY AAS
- 2019
- LIQUEFIED NATURAL GAS MANUFACTURING CERTIFICATE
- 2020
- CULINARY ARTS & HOSPITALITY AAS
- CULINARY ARTS FOUNDATIONS CERTIFICATE
- CULINARY ARTS SPECIALIST CERTIFICATE
- 2022
- MUSIC AA
- COMMERCIAL MUSIC AUDIO ENGINEERING CERTIFICATE
- PHARMACY TECHNOLOGY CERTIFICATE
- 2023
- LEGAL STUDIES CERTIFICATE
- BARBERING CERTIFICATE
- EMERGENCY MEDICAL TECHNOLOGY CERTIFICATE
- 2024
- SOCIAL MEDIA & DIGITAL COMMUNICATION MANGEMENT AAS
- PATIENT CARE TECHNICAL CERTIFICATE
- SOCIAL MEDIA MARKETING CERTIFICATE
- 2025
- RENEWABLE ENERGY CERTIFICATE
- MECHANICAL MAINTENANCE CERTIFICATE



# 2024

## Monroe Education Building Renovations

**Decades-old facility gets much-needed facelift with new classrooms, office space**

With nearly 60 years of dust collected on the floor of the Madison Monroe Educational Building at LSCPA, a new era for the historic facility started in August 2024. Administrators celebrated with a brick-breaking ceremony as the state-funded \$16.68 million renovation project got underway in earnest last week. Completion is expected July 1, 2025.

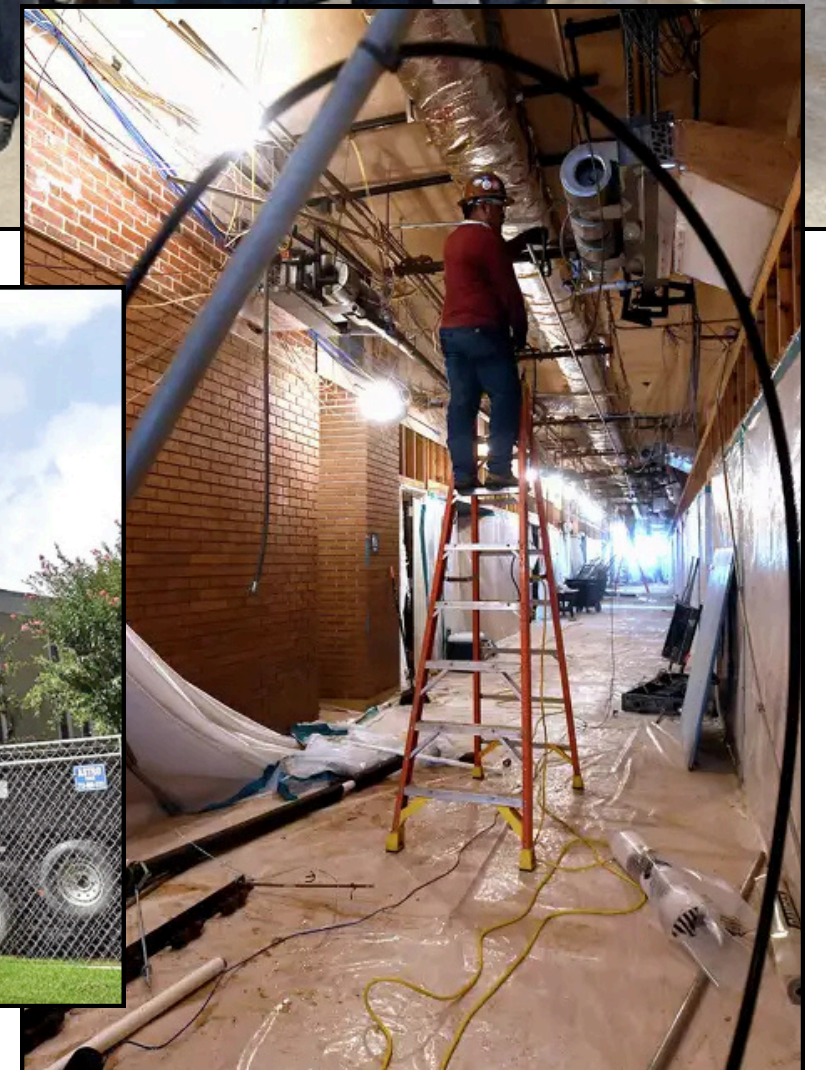
The Monroe Building, located at the center of the campus, was originally built in 1967. As time passed, the facility was retrofitted to accommodate the new demands of additional space and advancing technology. Ultimately, the changes couldn't keep up and the need for a full renovation made itself evident. Some of the features include a new roof, a sprinkler system, new air conditioning system and a large entry on the Lakeshore Drive side of the facility. Another big addition is a second-floor enclosed walkway from the Monroe Building to the adjacent Student Center. The project is multi-faceted in its benefits, offering new staff facilities as well as more space to grow new programs.

“We’re always thinking about how to better serve our community and offering more programs is one of the most important,” Reynard said. “This renovation will provide the space we need to grow comfortably well into the future.”



BRIDGE CITY LEGAL STUDIES FRESHMAN TERRANIE AJAO

SCHEDULED FOR COMPLETION 2025





# 10 More Important Items From the Past Decade



## 1 2015: New website, college logo

With the changing of the guard, the college went through a branding update with the new LSCPA logo being revealed. Along with the new logo came a new website that allowed visitors to more reliably find their way to information that would ensure easier access to the programs, financial aid, and other information offered by the college. Ten years later, the college updated its website once again, providing additional access to those seeking information about the college.



## 6 2019 & 2021: State Funding Leads to Tuition Cuts

The Texas State University System Board of Regents twice voted to invest in the future of students at the three Lamar State Colleges, including Port Arthur, with an additional \$17.3 million to “buy down” tuition and fees. The Board used this new money to reduce tuition and fees by an average of 25 percent to \$1,995 per semester. A second wave of tuition cuts came as the nation was looking to recover from an enrollment slump created by the Covid-19 pandemic impacts in 2020.

## 2 2016: Correctional Education: Second Chance Pell

LSCPA was selected as one of just 68 institutions of higher education nationwide to take part in the Second Chance Pell Grant program. The program allows incarcerated individuals to apply for federal aid to help complete college and university certificates and degrees. LSCPA works with students housed in the Federal Correctional Complex in Beaumont and the Stiles Unit of the Texas Department of Criminal Justice. At the time, the college was one of six two-year schools participating in the program.



## 7 2019 & 2024: Title V Hispanic-Serving Institution Grant

LSCPA has twice been awarded the U.S. Department of Education’s Developing Hispanic-Serving Institutions program grant. The \$2,984,957.61 five-year grant, one of seven DHSI grants awarded in Texas, supports LSCPA’s Title V program, expanding educational opportunities and improving outcomes not just for Hispanic students but for all LSCPA students. This is the 2nd consecutive five-year Title V grant awarded to LSCPA.



## 3 2016: Seahawk Landing Student Apartments Open

The Seahawk Landing student apartments celebrated a grand opening after several years of planning and execution brought the project to fruition. Seahawk Landing offers more than 100 beds for students, located in the heart of the LSCPA campus.



## 8 2022: Press Building Opens with Culinary Arts Program

Tasty things were afoot as The Press Building opened as home to LSCPA’s new Culinary Arts Program. The Press Building came to life after renovation of the old Port Arthur News facilities on Lakeshore Drive. The Culinary Arts Program offered degrees and certificates in cooking and hospitality areas of study. Bistro 549, a cafe’ run by LSCPA students, also came to life with the start of the program.

## 4 2017 & 2021: Sabine Showdown Tournaments

With the inaugural Sabine Showdown Fishing Tournament taking place seven years ago and a golf tournament added four years later, the college has seen hundreds of competitors participate for the sake of raising money for LSCPA, its programs and student scholarships. The annual events receive supports from its business and corporate sponsors in addition to individual competitors. The fishing tournament hands out \$15,000 in prize money every year, while trophies welcome the winners of the golf tourney.



## 9 2024: TSUS Polk County Center

LSCPA joined Lamar Institute of Technology and Lamar State College Orange in bringing to life the Texas State University System’s Polk County Center in Livingston. The facility, which filled a void left by Angelina College when it departed the area, provides education in business, technology, and academics. LSCPA initially provided training in Allied Health and Workforce Training CDL classes, seeking to fill established needs for those living in Polk County.



## 5 2017 & 2019: Aspen Award Recognition

Twice, LSCPA was awarded the coveted Aspen Prize for Community College Excellence, ranking the school among the top 150 community colleges in the U.S. The college was selected from a pool of nearly 1,000 public two-year colleges nationwide to compete for the \$1 million Aspen Prize, which is awarded biennially to 10 of the more than 1,000 two-year colleges in the United States.



## 10 2024: Seahawks Athletics Celebrates 20 Years

The men’s basketball and women’s softball teams celebrated two decades in existence with the start of the 2024-25 seasons. Named the Seahawks in honor of the old Port Arthur semi-pro baseball team, LSCPA features nearly 75 athletic events each year. The men’s basketball team reached the national tournament in 2011, while the women’s softball team reached the NJCAA Region 14 Tournament finals in 2022.



# 2023-2024: Highlighting a Record-Setting School Year

**50+**  
PROGRAMS

LSCPA offers more than 50 degree & certificate programs

Added in 2023-2024:

- Social Media & Digital Communications
- Emergency Medical Service Technician
- Barbering
- Mechanical Maintenance

BEAUMONT FRESHMAN BARBER STUDENT DOMINIQUE BLANCHARD



**69%**  
Fall 2023

Percentage of Students Receiving Financial Aid

Best In Texas

LSCPA's Graphic Design Associate Degree Program has been ranked No. 1 in Texas and No. 22 in the nation by TechGuide.org.

**#1**

PORT ARTHUR SOPHOMORE GRAPHIC DESIGN STUDENT ALEJANDRO ARRIAGA



**1:17**

Faculty-to-Student Ratio  
During the Fall 2023 semester, there was a ratio of one instructor for every 17 students at LSCPA.

SILSBEE FRESHMAN ACCOUNTING STUDENT AMBER DELAUNE



**TOP 10**

Best Colleges in Texas in 2024  
CollegeSimply.com

PORT ARTHUR PROCESS TECHNOLOGY GRADUATE KHANH HA



**1,432**

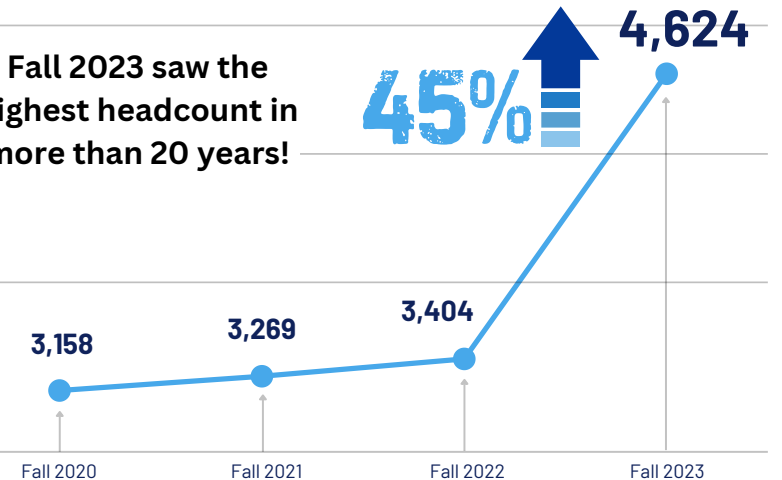
Earned Credentials

All degrees and certificates earned at LSCPA during the Academic Year 2024.

## Enrollment Explosion!

Fall 2023 saw the highest headcount in more than 20 years!

**45%** ↑



**32%** Increase in contact hours in the past two years

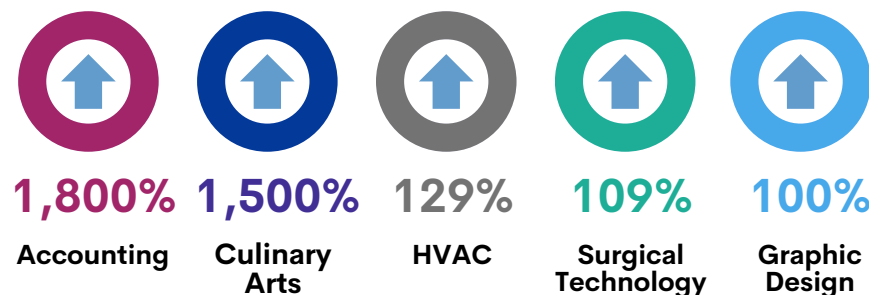
## 2023-2024 COLLEGE PROFILE

ACADEMIC MAJORS	3,245 (42%)
TECHNICAL MAJORS	4,409 (58%)
FULL-TIME STUDENTS	1,652 (22%)
PART-TIME STUDENTS	6,002 (78%)
ASSOCIATE DEGREES AWARDED	305 (53%)
CERTIFICATES AWARDED	271 (47%)

**#11**  
Spring 2024

RNCareers.org ranking of Texas' Top RN Programs.

## TOP DEGREE PROGRAM ENROLLMENT INCREASES 2020 TO 2023



**\$1.6M**

Grants received in the past 12 months by Workforce Training.



ORANGE SOPHOMORE NURSING STUDENT FELICITY LAYNE



# More Campus Highlights ...



Hispanic Serving Institution

As a Designated HSI campus, LSCPA offers several services, available to all students who attend the college:

- Online Tutoring
- On-Campus Tutoring
- Laptop & Graphing Calculator Loans
- Success Coaches
- Student Success Liasons
- Career Exploration Center

3,141

Total certificates & degrees awarded from Spring 2019 to Fall 2024.

#1

Tastiest in Texas The Culinary Arts and Hospitality program was named Best in Texas by Intelligent.com

TOP 10

LSCPA was ranked among the top 10 school in the United States by Academic Influence



SEAHAWKS 2024-2025 SOFTBALL SCHEDULE



45%

New to the Game First-Generation students attending classes during the 2023-2024 school year.

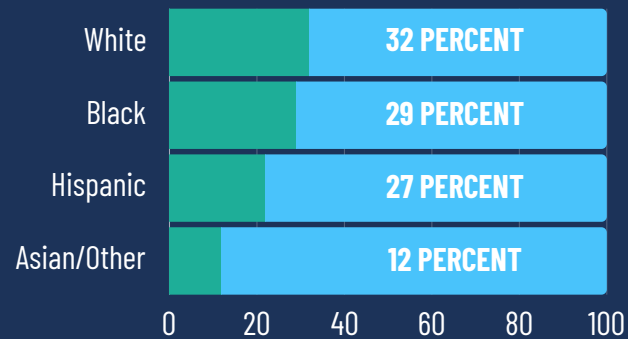


SEAHAWKS 2024-2025 BASKETBALL SCHEDULE



WICHITA, KANSAS FRESHMAN ZION YOUNG

## STUDENT ETHNICITY



Based on Fall 2023-Spring 2024 Enrollment



5-STAR REVIEW NICHE.COM

“This is an excellent college because of its understanding professors. The school has a very calm atmosphere because everyone is so friendly and helpful. The cafe's food is excellent, especially at breakfast, and the staff is incredibly friendly. Because it is so reasonably priced, many students can access everything they need.”

BY LSCPA SOPHOMORE



## ABOUT THE COLLEGE

Founded in 1909 as Port Arthur Business College. Became Port Arthur Collegiate Institute in 1911. Merged with Lamar University in 1975 as part of the Lamar University System. In 1995, the Texas Legislature dissolved the Lamar University System and the college joined the Texas State University System. The school was officially renamed Lamar State College Port Arthur in 1999.

### ACCREDITATION

- Accreditation Review Council on Education in Surgical Technology and Surgical Assisting
- Commission on Accreditation of Allied Health Education Programs
- Southern Association of Colleges and Schools Commission on Colleges

### APPROVING ORGANIZATIONS

- American Bar Association
- Texas Board of Nursing
- Texas Certification Board of Addiction Professionals
- Texas Department of Aging and Disability Services
- Texas Department of Licensing and Regulation
- Texas Education Agency
- Texas Workforce Investment Council
- Veterans Administration

## FIND US ONLINE!



LamarPA.edu



Facebook.com/LSCPA



Instagram.com/lscportarthur



LinkedIn.com/school/lamar-state-college-port-arthur



LamarStateSeahawks.com



## THE TEXAS STATE UNIVERSITY SYSTEM 2023-2024 BOARD OF REGENTS

Alan L. Tinsley, Chairman	Madisonville
Dionicio (Don) Flores, Vice Chairman	El Paso
Charlie Amato	San Antonio
Duke Austin	Houston
Sheila Faske	Rose City
Russell Gordy	Houston
Stephen Lee	Bastrop
Tom Long	Frisco
William F. Scott	Nederland
Kelvin Elgar, Student Regent	Beaumont

### ADMINISTRATION

Brian McCall, PhD	Chancellor
Nelly R. Herrera, JD	Vice Chancellor and General Counsel
John Hayek, PhD	Vice Chancellor for Academic & Health Affairs
Daniel Harper, MBA	Vice Chancellor for Finance & Chief Financial Officer
Sean Cunningham, JD	Vice Chancellor for Governmental Relations
Carole Fox, CPA	Chief Audit Executive
Mike Wintemute, PhD	Vice Chancellor for Marketing and Communications

## LAMAR STATE COLLEGE PORT ARTHUR ADMINISTRATION

Betty Reynard, EdD	President
Pamela Millsap, PhD	Vice President for Academic Affairs
Mary Wickland, CPA	Executive Vice President for Finance and Operations
Tessie Bradford, EdD	Dean of Student Services
Helena Gawu, MLS	Dean of Library Services
Ben Stafford, DrPH	Vice President of Workforce Training and Continuing Education
Melissa Armentor, EdD	Dean of Academic and Technical Programs
Bruce Hodge, MA	Director of Dual Enrollment
Wayne Wells, MEd	Director of Correctional Instruction
Scott Street, MBA, MS	Director of Institutional Advancement and Athletics
Steven Zani	Chair of General Education and Developmental Studies
Sheila Guillot, MSEd	Chair of Business and Industrial Technology
Shirley MacNeill, MSN, RN, CNE	Chair of Allied Health
Blas Canedo-Gonzalez, DMA	Chair of Commercial Music, Visual & Performing Arts



# LSCPA

LAMAR STATE COLLEGE ★ PORT ARTHUR

MEMBER THE TEXAS  STATE UNIVERSITY SYSTEM™

Lamar State College Port Arthur is an equal opportunity institution and does not discriminate against persons on the basis of race, age, religion, sex, disability, color, sexual orientation, national origin or veteran status. LSCPA's Annual Report to the Community is a publication of the Public Information Office, Gerry L. Dickert, Public Information Coordinator.